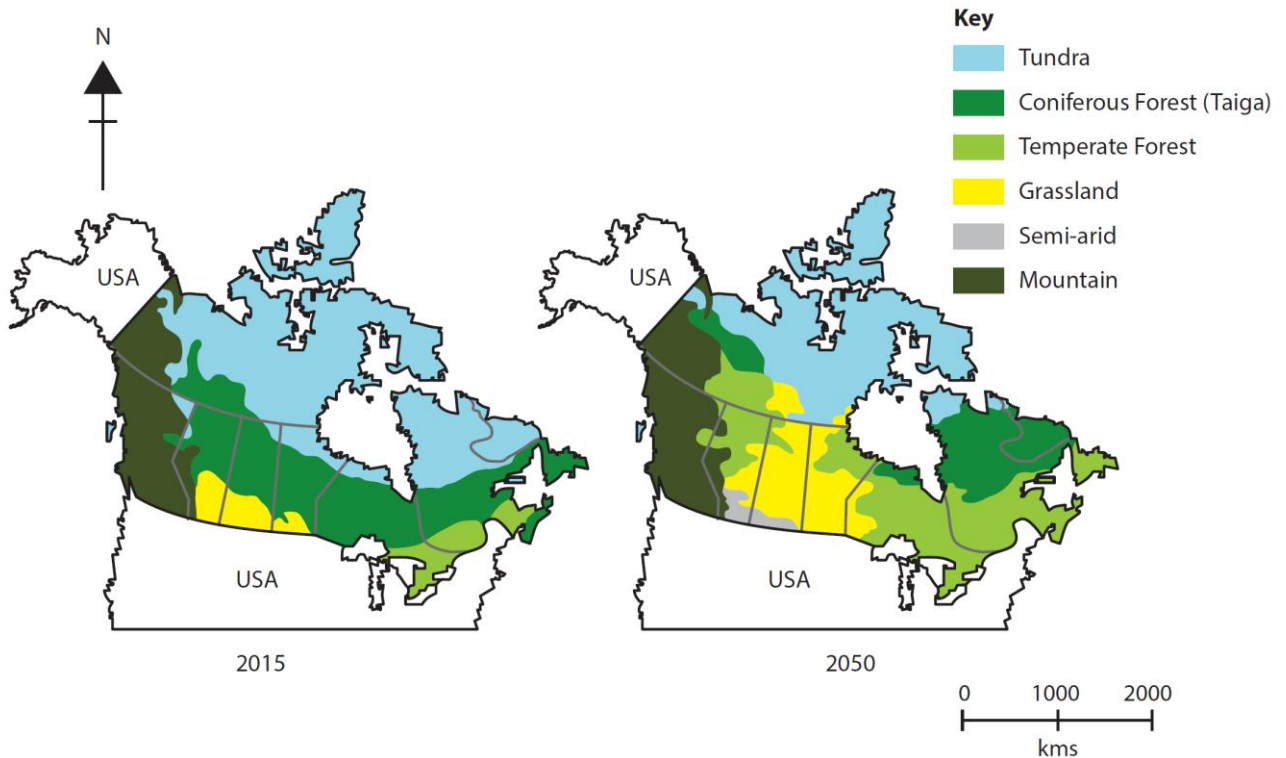


The total of all marks is 40.

Good luck!

TOPIC 1: BATTLE FOR THE BIOSPHERE

Study figure below. It shows the predicted impact of a change in climate on the location of Canadian biomes.



1) Which one of the following best describes the location of tundra in 2015? (max 1 mark)

- A) In the north.
- B) On the west coast.
- C) Along the border with the USA.
- D) On the east coast.

2) Which one of the following best explains the change in the area of tundra by 2050? (max 1 mark)

- A) Deforestation.
- B) Rising global temperatures.
- C) Falling sea level.
- D) Falling global temperatures.

3) Describe how the area of tundra is predicted to change by 2050. (max 2 marks)

Your Answer

4) Outline one way in which the biosphere maintains soil health. (max 2 marks)

Your Answer

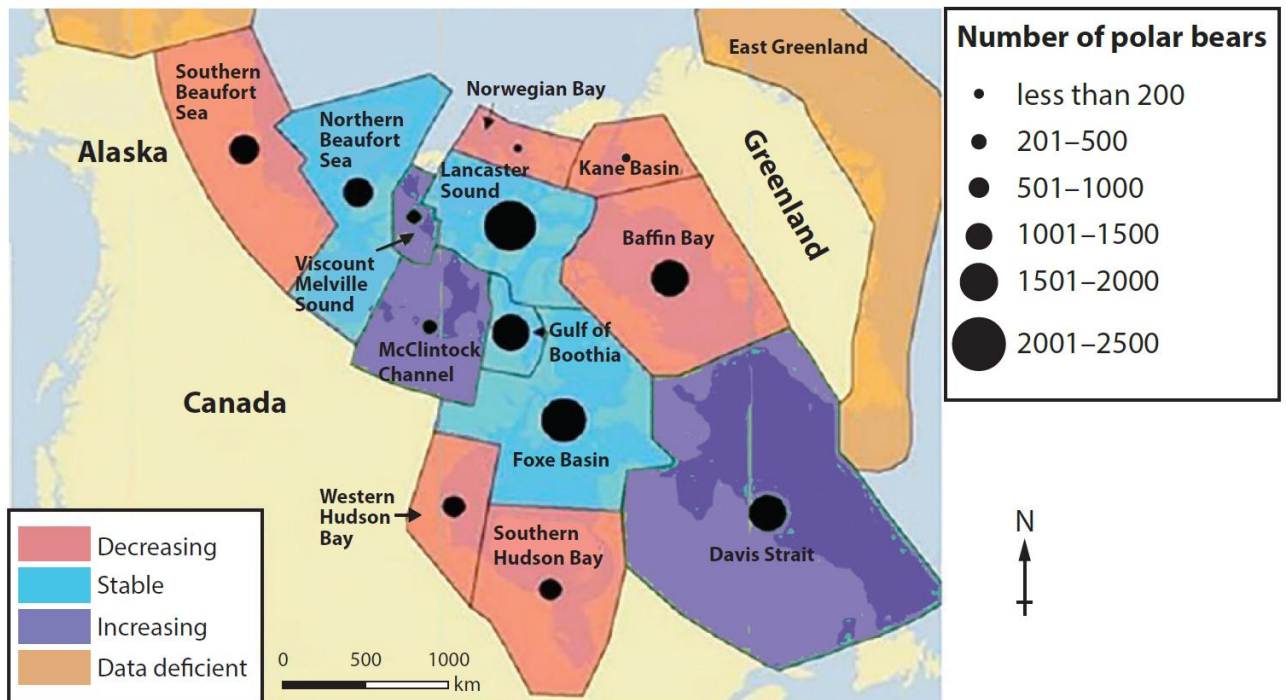
5) Describe one local/national and one global approach used to manage the biosphere. (max 4 marks)

Your Answer

Local or national approach

Global approach

Study figure below. It shows the polar bear population in North America and Greenland.



6) Describe the pattern of the polar bear population. (max 3 marks)

Your Answer

7) In which one of the following regions is the polar bear population likely to disappear first? (max 1 mark)

- A) Norwegian Bay
- B) Gulf of Boothia
- C) Viscount Melville Sound
- D) Western Hudson Bay

8) State one reason why climate change would affect the numbers of polar bears.

(max 1 mark)

Your Answer

9) For polar bears, outline two ways it has adapted to its extreme environment.

(max 3 marks)

Your Answer

10) Describe one global action which aims to protect extreme environments from the impacts of climate change. *(max 2 marks)*

Your Answer

TOPIC 2: CHALLENGES OF A RURAL AND AN URBANISING WORLD

Study figure below. It shows an isolated rural area on the Isle of Harris, Scotland.



1) Identify one possible cause of rural isolation shown on figure above. (max 1 mark)

- A) Decline in rural to urban migration.
- B) Improved broadband connectivity.
- C) Poor transport links.
- D) Increase in counter-urbanisation.

2) Which one of the following is the likely result of rural isolation? (max 1 mark)

- A) Increase in new housing.
- B) Houses left empty.
- C) More jobs available.
- D) Increase in population.

3) Outline one challenge facing the Isle of Harris as a result of rural isolation. (max 2 marks)

Your Answer

4) Define the term cash-crop farming. (*max 2 marks*)

Your Answer

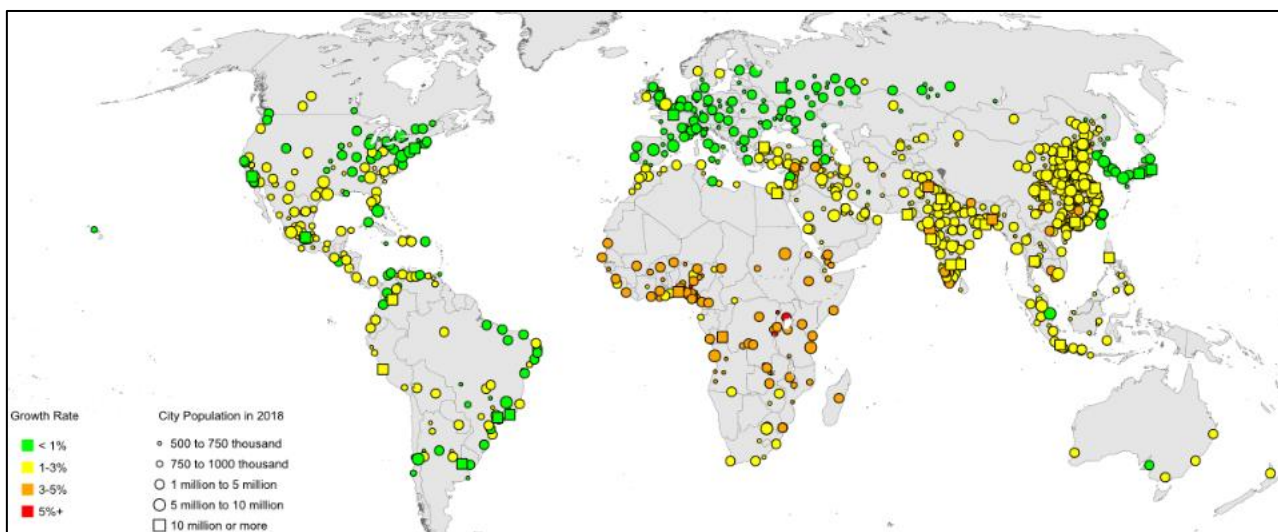
5) Outline one impact of increasing rural isolation on local services. (*max 2 marks*)

Your Answer

6) Outline one way farms in the developed world can diversify. (*max 2 marks*)

Your Answer

Study figure below. It shows estimated growth rates of urban agglomerations by size class in 2018-2030.



7) Complete the following sentences about the changes shown on figure above. Use some of the words in the box below. (max 2 marks)

mountainous Oceania increase high
many few Africa decrease low Europe

The urban areas with the highest growth rate are mostly found in Many countries in this part of the world are described as income countries. This growth in population is caused by a high rate of natural This is also because people are migrating from rural areas.

8) Which one of the following best describes counter-urbanisation? (max 1 mark)

- A) Movement of people from rural areas to cities.
- B) The growth of squatter settlements in rural areas.
- C) Movement of people from cities to rural areas.
- D) Increased traffic congestion in the rural areas.

9) Suggest one reason why some urban areas have high population growth rates. (max 2 marks)

Your Answer

10) Outline one economic change to rural communities caused by counter-urbanisation. (max 2 marks)

Your Answer

Study figure below. It shows a billboard of new housing on a brownfield site in Spennymoor, County Durham.



11) Which one of the following best describes a brownfield site? (max 1 mark)

- A) Countryside that has never been developed.
B) Land which is protected from any future development.
C) Part of a city which is only used for housing.
D) Land that has already been developed in the past.

12) Suggest one reason why some people might be against developing brownfield sites such as the one shown in above. (max 2 marks)

Your Answer

[illegible]