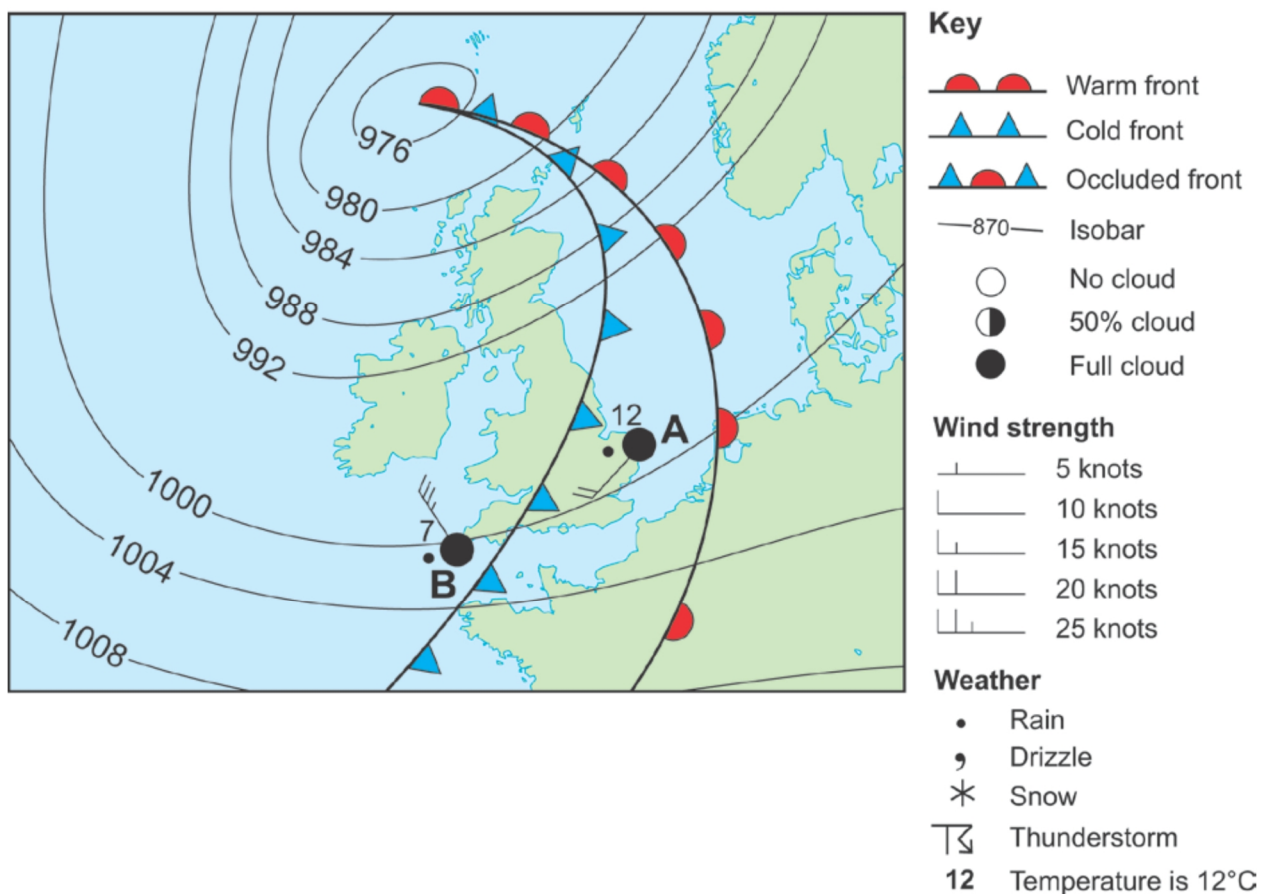


The total of all marks is 20.

Good luck!

1. Study Weather Map below. It shows a low pressure system (depression) over the British Isles in March 2019. Calculate the difference in temperature between the two weather stations shown on Weather Map. (max 1 mark)



Weather Map

Your Answer _____

Use the key from Weather Map to complete the table below. (max 4 marks)

The wind speed at Station A was	
The amount of cloud at Station A was	
The type of precipitation falling at Station A was	
The wind direction at Station A was	

Give one reason why it is raining at weather station B. (max 2 mark)

Your Answer _____

2. Figure shows a settlement in polar environment. Study figure. Which of the following suggests that this is an extreme environment? (max 1 mark)



- A The small settlement.
- B The absence of industry.
- C The pack ice in the bay.
- D The lack of grass on the football pitch.

Which of the following is a feature of housing design in polar environments? (*max 1 mark*)

- A Steep roof angles.
- B Painted white to absorb heat.
- C Large window size.
- D Built of stone.

Outline *one* threat to the survival of settlements in polar environments. (*max 2 marks*)

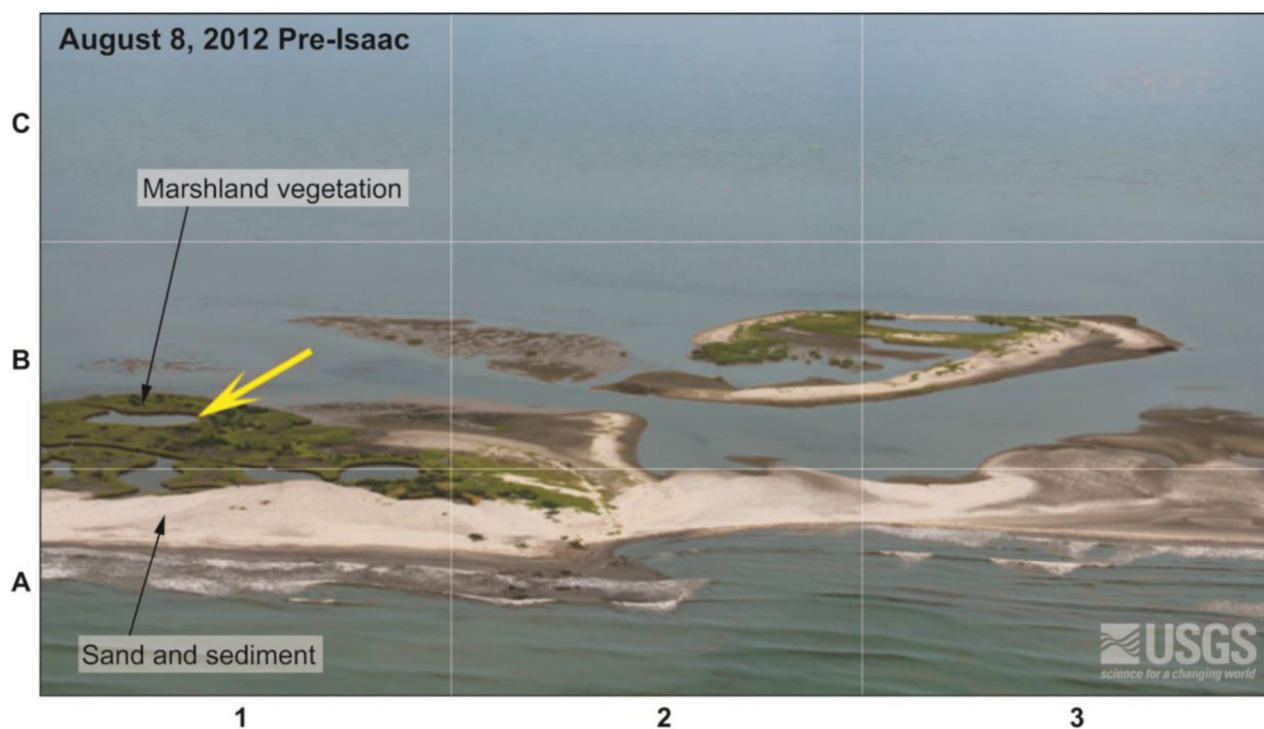
Your Answer _____

Outline *one* reason why *global* action is necessary to protect polar environments. (*max 3 marks*)

Your Answer _____

3. Use figures to compare the coastal landscapes before and after the passage of Hurricane Isaac. In order to compare the coastal landscapes, both similarities and differences should be highlighted. (*max 6 marks*)

The yellow arrow in each image points to the same feature.



Chandeleur Islands, Louisiana, before and after the passage of
Hurricane Isaac (an extreme weather event)

Your Answer _____

